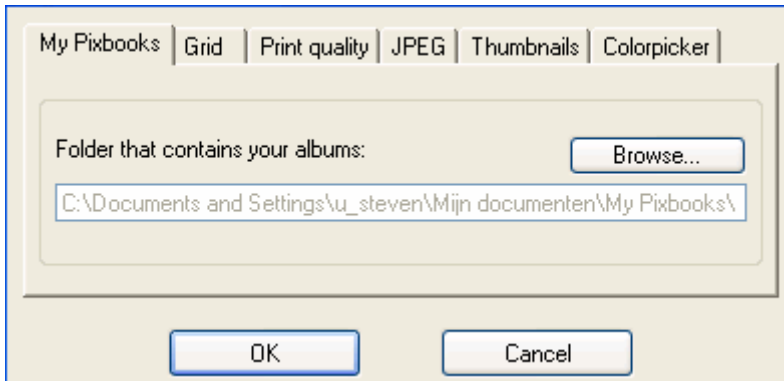


10 Settings

You can change the program settings by clicking 'Options' in the main window followed by 'Settings'. The following screen appears:



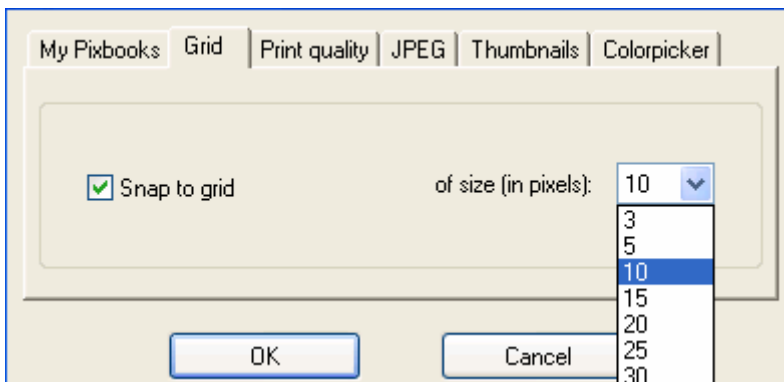
Program settings - album directory

10.1 The album directory

All albums and related base files and images are stored in the above mentioned directory. You can change the location of this map in the screen above.

10.2 Snap to grid

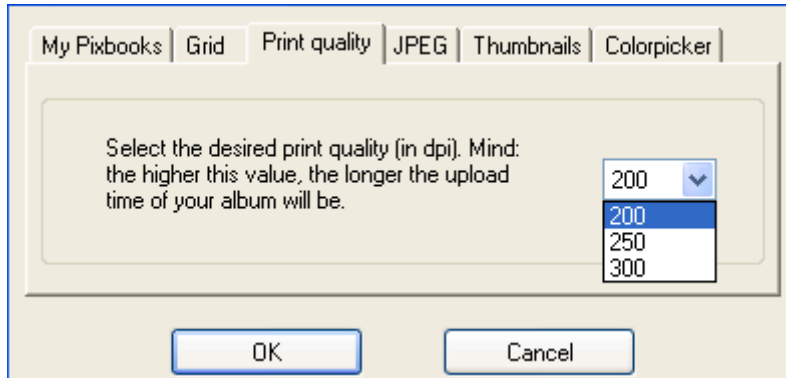
In this tab you are able to toggle 'Snap to grid' on or off. You can also define the pixel size of the grid.



Program settings - grid

10.3 Print quality

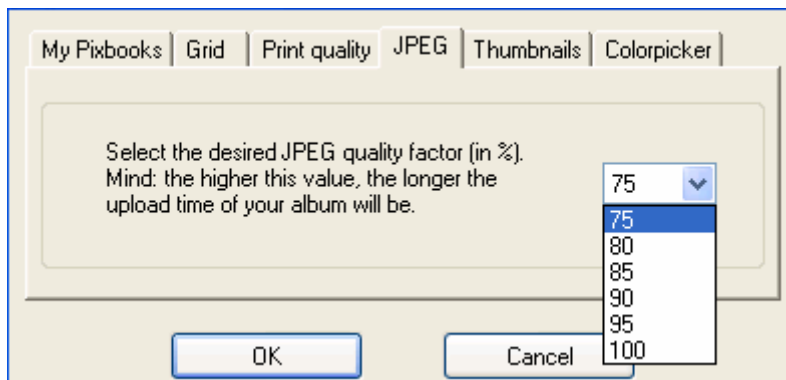
This tab allows you to define the minimum print quality of your album. The default setting is 200 dpi (dots per inch) which creates an album of very high quality. Increasing this value increases the print quality to a very high standard but bear in mind that the higher this setting, the longer it will take to upload your album. Note: the software always aims for the highest possible printing quality (dpi value).



Program settings - print quality

10.4 JPEG

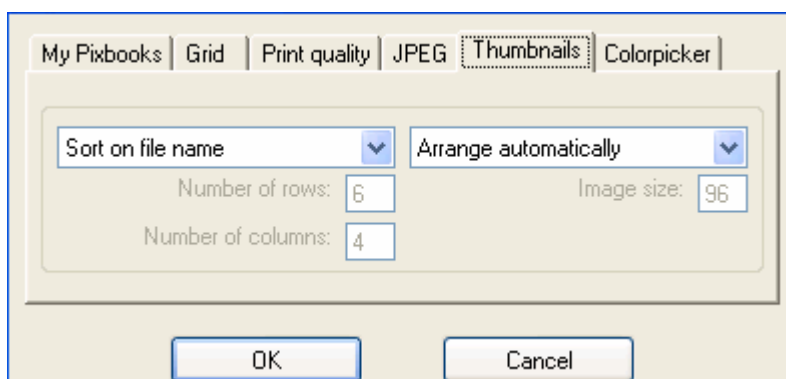
This tab allows you to define the JPEG compression quality of your images. The default setting is 75% which creates images of very high quality. Increasing this value results in less compression but bear in mind that the higher this setting, the longer it will take to upload your album.



Program settings - JPEG quality

10.5 Thumbnails

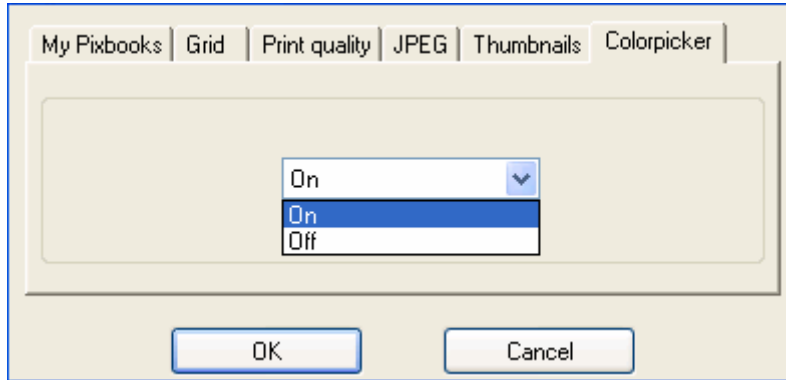
This tab allows you to specify how the thumbnails will be sorted. You can sort the thumbnails either by file name or by file date. The automatic batch function (F6-F7) will paste all pictures in the order set by this parameter. You can also choose to arrange the thumbnails manually instead of automatically. This way you can define the size of the thumbnails and specify the number of rows/columns.



Program settings - thumbnails

10.6 Colorpicker

This tab allows you to enable/disable the colorpicker. The colorpicker is used to pick a color from your screen.



Program settings – colorpicker